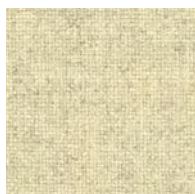


Tonica 2

kvadrat

Tonica 2



223



643



611



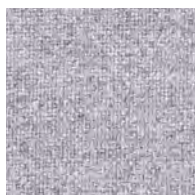
613



531



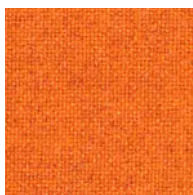
612



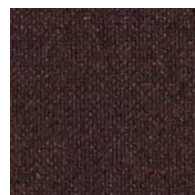
633



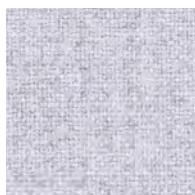
511



543



693



623



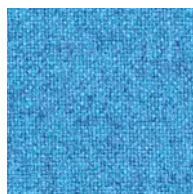
713



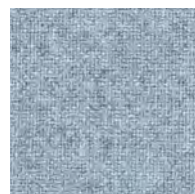
672



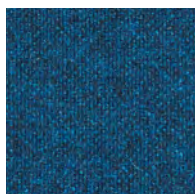
763



743



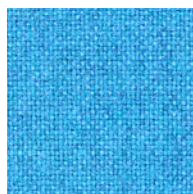
723



773

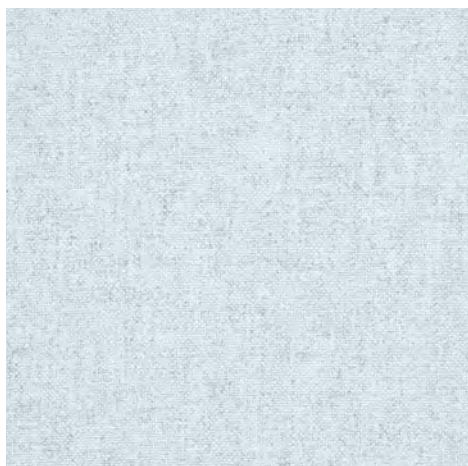


732

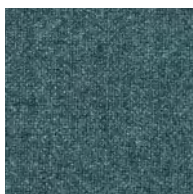


733

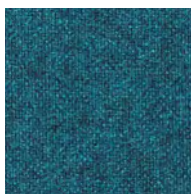
Tonica 2



813



832



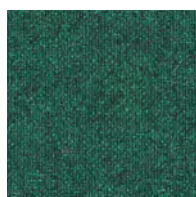
873



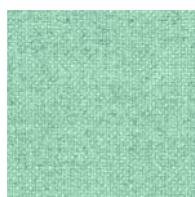
123



831



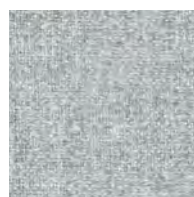
962



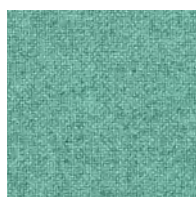
923



111



171



933



523



353



182



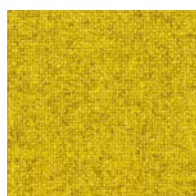
233



533



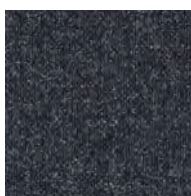
383



411



443



192



132

Tonica 2

Designed by Georgina Wright

DK

Anvendelse Kontorer, hoteller, institutioner, private indretninger. Stor slidstyrke.

Beskrivelse 100% ny uld. Bredde ca. 140 cm. Vægt ca. 700 g/lbm. Stykfarvet. Nuanceforskel kan forekomme.

Ægkant ↔

Slidstyrke: Ca. 45.000 slidbevælgelser efter Martindale metoden EN ISO 12947. **Lysægthed** (ISO) 5-7. **Pilling** (EN ISO) 4-5. **Gnidægthed** (ISO) tør 4-5, våd 4-5. **Airflow** 487 Pa s/m. **Flammesikring:** AS/NZS 3837 Class 2. BS 5852 Crib 5 med flammesikring. BS 5852 ignition source 3. BS 5852 part 1. EN 1021-1/2. IMO FTP Code 2010:Part 8. NF D 60 013. SN 198 898 5.3 med flammesikring. UNI 9175 11M. US Cal. Bull. 117-2013. ÖNORM B1 / Q1. (Kopi af testrapport kan rekvireres).

Vedligeholdelse Se ISO symboler.

UK/US

Application Offices, hotels, institutions, domestic use. Great durability.

Description 100% new wool. Width app. 55 inches (140 cm). Weight app. 22.5 oz/ly (700 g/lin.m). Piece dyed. Colour differences may occur.

Selvedge/Direction ↔

Abrasion: App. 45,000 rubs acc. to the Martindale method EN ISO 12947. **Lightfastness** (ISO) 5-7. **Pilling** (EN ISO) 4-5. **Fastness to rubbing** (ISO) dry 4-5, wet 4-5. **Airflow** 487 Pa s/m. **Flame resistance:** AS/NZS 3837 Class 2. BS 5852 Crib 5 with treatment. BS 5852 ignition source 3. BS 5852 part 1. EN 1021-1/2. IMO FTP Code 2010:Part 8. NF D 60 013. SN 198 898 5.3 with treatment. UNI 9175 11M. US Cal. Bull. 117-2013. ÖNORM B1 / Q1. (Copy of test report available).

Care Please see the ISO symbols.

DE

Anwendungsbereich Büros, Hotels, Objektbereich, privater Wohnbereich. Hohe Strapazierfähigkeit.

Beschreibung 100% Schurwolle. Breite ca. 140 cm. Gewicht ca. 700 g/m. Stückgefärbt. Farbunterschiede können vorkommen.

Webkant ↔

Scheuerfestigkeit: Ca. 45.000 Scheuerhübe nach der Martindale Methode EN ISO 12947. **Lichtechtheit** (ISO) 5-7. **Pilling** (EN ISO) 4-5. **Reibechtheit** (ISO) trocken 4-5, nass 4-5. **Airflow** 487 Pa s/m. **Flammschutz:** AS/NZS 3837 Class 2. BS 5852 Crib 5 mit Ausrüstung. BS 5852 ignition source 3. BS 5852 part 1. EN 1021-1/2. IMO FTP Code 2010:Part 8. NF D 60 013. SN 198 898 5.3 mit Ausrüstung. UNI 9175 11M. US Cal. Bull. 117-2013. ÖNORM B1 / Q1. (Testbericht verfügbar).

Pflege Siehe ISO Pflegesymbole.

NL

Toepassing Kantoren, hotels, instellingen, de privéfeer. Uitstekende slijtvastheid. **omschrijving** 100% scheerwol. Breedte ca. 140 cm. Gewicht ca. 700 gr/str. m. Stukgeverfd. Kleurverschillen kunnen optreden.

Zelfkant ↔

Slijtvastheid: Ca. 45.000 toeren Martindale EN ISO 12947. **Lichtechtheid** (ISO) 5-7. **Pilling** (EN ISO) 4-5. **Wrijftechtheid** (ISO) droge 4-5, natte 4-5. **Airflow** 487 Pa s/m. **Brandwerendheid:** AS/NZS 3837 Class 2. BS 5852 Crib 5 met behandeling. BS 5852 ignition source 3. BS 5852 part 1. EN 1021-1/2. IMO FTP Code 2010:Part 8. NF D 60 013. SN 198 898 5.3 met behandeling. UNI 9175 11M. US Cal. Tech. Bull. 117. ÖNORM B1 / Q1. (Op aanvraag sturen wij u graag een kopie van het testrapport toe).

Onderhoud Zie de ISO symbolen.

FR

Domaine d'utilisation Tissu d'ameublement pour aménagement privé et public. Grande résistance.

Description 100% laine vierge. Largeur env. 140 cm. Poids env. 700 g/m lg. Teinture à la pièce. Ecarts des coloris possibles.

Lisière ↔

Résistance à l'abrasion: Env. 45.000 révolutions selon le procédé Martindale EN ISO 12947. **Résistance à la lumière** (ISO) 5-7. **Boulochage** (EN ISO) 4-5. **Résistance au frottement** (ISO) sec 4-5, mouillé 4-5. **Airflow** 487 Pa s/m. **Normes au feu:** AS/NZS 3837 Class 2. BS 5852 Crib 5 avec traitement. BS 5852 ignition source 3. BS 5852 part 1. EN 1021-1/2. IMO FTP Code 2010:Part 8. NF D 60 013. SN 198 898 5.3 avec traitement. UNI 9175 11M. US Cal. Bull. 117-2013. ÖNORM B1 / Q1. (La copie du compte rendu des tests est disponible sur demande).

Entretien Voir les symboles ISO.

IT

Destinazione d'uso Rivestimenti per imbottiti, casa e contract. Alta resistenza all'abrasione. **Caratteristiche** 100% lana vergine. Altezza circa 140 cm. Peso circa 700 gr/mtl. Tinto in pezza. Possibili differenze per colore.

Cimosa ↔

Resistenza all'abrasione: circa 45.000 cicli/metodo Martindale EN ISO 12947. **Resistenza alla luce** (ISO) 5-7. **Pilling** (EN ISO) 4-5. **Resistenza allo sfregamento** (ISO) condizione a secco 4-5, condizione umido 4-5. **Airflow** 487 Pa s/m. **Ignifugazione:** AS/NZS 3837 Class 2. BS 5852 Crib 5 trattato ignifugo. BS 5852 ignition source 3. BS 5852 part 1. EN 1021-1/2. IMO FTP Code 2010:Part 8. NF D 60 013. UNI 9175 11M. US Cal. Bull. 117-2013. SN 198 898 5.3 trattato ignifugo. ÖNORM B1 / Q1. (Disponibile copia del test).

Manutenzione Per favore seguire simboli ISO.

ES

Aplicación Oficina, hoteles, instituciones, hogares privados. Gran resistencia al desgaste.

Descripción 100% lana virgen. Anchura aprox. 140 cm. Peso aprox. 700gr/ml. Teñido a la pieza. Posibles variaciones de color.

Filo ↔

Resistencia al desgaste: Aprox. 45.000 ciclos según el método Martindale EN ISO 12947. **Resistencia a la luz** (ISO) 5-7. **Relleño** (EN ISO) 4-5. **Solidez al frotamiento** (ISO) seco 4-5, mojado 4-5. **Airflow** 487 Pa s/m. **Resistencia al fuego:** AS/NZS 3837 Class 2. BS 5852 Crib 5 con tratamiento. BS 5852 ignition source 3. BS 5852 part 1. EN 1021-1/2. IMO FTP Code 2010:Part 8. NF D 60 013. SN 198 898 5.3 con tratamiento. UNI 9175 11M. US Cal. Bull. 117-2013. ÖNORM B1 / Q1. (Copia del informe de ensayos disponible).

Mantenimiento Consulte los símbolos ISO.

JP

用途 オフィス、ホテル、各種施設、住宅インテリア。耐耗性大。

詳細 100% ニューウール。幅:140 cm。重量:1mあたり約700 g。製品染め。色彩ニューアンスに多少の差が生じる可能性あり。

耳、ふち、 ↔

磨耗: マーチンデール法により磨耗運動約45,000回。EN ISO 12947. **色あせ保証** (ISO) 5-7. **ピリング** (EN ISO) 4-5. **摩擦保証** (ISO) 乾燥状態4-5、濡れた状態4-5. **気流:** 487 Pa s/m. **耐炎性:** AS/NZS 3837 Class 2. 特殊耐炎処理を行うことにより、BS 5852 Crib 5 に到達可能。BS 5852 ignition source 3. BS 5852 part 1. EN 1021-1/2. IMO FTP Code 2010:Part 8. NF D 60 013. 特殊耐炎処理を行うことにより、SN 198 898 5.3 に到達可能。UNI 9175 11M. US Cal. Bull. 117-2013. ÖNORM B1 / Q1. (テストレポートのコピー入手可能。)

手入れ

ISO シンボル参照。

CN

适用范围 办公室, 宾馆酒店, 公共设施, 居家使用。耐磨性极佳。

成分 100% 羊毛。幅宽55英寸(140cm)。重量700克/延米。匹染色面料。颜色可能发生轻微色差。

织边方向 ↔

马丁代尔法约45,000转。EN ISO 12947. **光照色牢度** (ISO) 5-7. **起毛起球** (EN ISO) 4-5. **耐磨色牢度** (ISO) 干燥4-5, 湿4-5. **气流阻力** 487 Pa s/m. **阻燃性:** AS/NZS 3837 Class 2. 特别耐火处理时BS 5852 Crib 5 可以满足。BS 5852 ignition source 3. BS 5852 part 1. EN 1021-1/2. IMO FTP Code 2010:Part 8. NF D 60 013. 特别耐火处理时SN 198 898 5.3 可以满足。UNI 9175 11M. US Cal. Bull. 117-2013. ÖNORM B1 / Q1.

(可提供测试报告副本。)

维护 请参照ISO标志。



10 year warranty



Quality and environmental system accreditation according to ISO 9001 and ISO 14001.

*ACT® Registered Certification Marks

Encouraging the use of sustainable fibres. Durable and high quality. Hazardous substances restricted.

Contact and further information www.kvadrat.dk

US contact info: 1-800-620-9309